



230_{VAC}

DU.350N



UNDERGROUND INSTALLATION

oil submerged gear

up to 4.0 m



CONTROL UNITS:

DU.350N — BRAINY HEADY

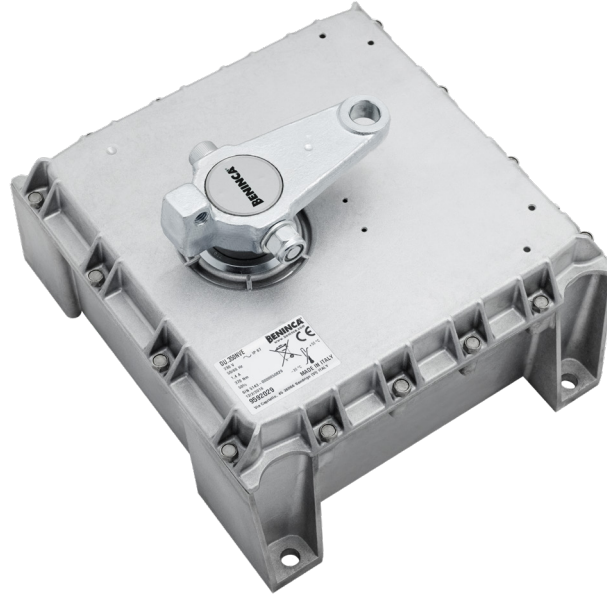
DU.350NV — BRAINY HEADY

DU.350NVE — BRAINY

DU.350NGE — BRAINY

BENINCA

100%
Made in Italy

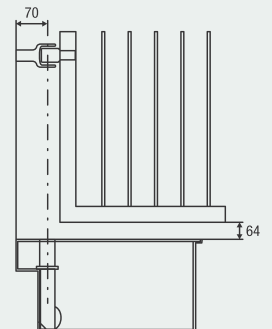
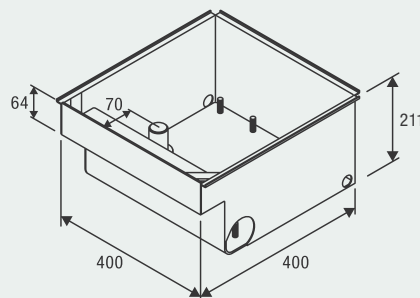
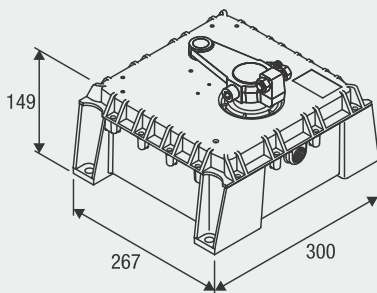


230 Vac

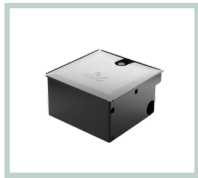
- Irreversible electromechanical geared motors for gates of considerable sizes
- Adjustable mechanical stop included
- Available in the quick version (DU.350NV) for doors up to 3 m and in the version equipped with toothed wheel in cast iron (DU.350NGE)
- The version with encoder (DU.350NVE) ensures crush prevention and precision in the gate moving phases

Cams' disk not included

www.beninca.com



BENINCA



DU.350CF
Self-supporting foundation box with cataphoretic painted finish, max. opening angle 110°. Supplied only with cover, requires release accessory SB.DU350.L, SB.DU350.K, SB.180.K or SB.180.L.



SB.DU350.K
Kit comprising personalised release key and components to connect the motor to the gate. Mechanical stop incorporated.



SB.DU350.L
Kit comprising release hex key and components to connect the motor to the gate. Mechanical stop incorporated.



SB.180.K
Kit comprising personalised release key and components to connect the motor to the gate, for openings up to 180°.



SB.180.L
Kit comprising release hex key and components to connect the motor to the gate, for openings up to 180°.



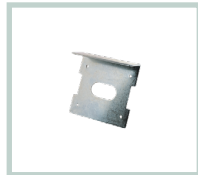
DU.350ST
Adjustable mechanical open stop 80°/85°/90°/95°/100°/105°.



DU.V96
12 Vac/dc vertical electric lock, supplied with counterplate. Permits internal/external release.



DU.V90
12 Vac/dc horizontal electric lock, supplied with counterplate. Permits internal/external release.



DU.9990
Covering plate for DU.V90.



E.LOCK
230 Vac vertical electric lock, supplied with counterplate.



E.LOCKSE
Extended cylinder for E.LOCK electric lock. It allows unlocking gates up to 55mm-thick from the outside.



DU.350FC
Watertight limit switches with cam disk included.



ID.TA
Warning board.

AUTOMATISMI BENINCÀ SpA • Via del Capitello, 45 • 36066 Sandrigo (VI) ITALY • T +39 0444 751030 • sales@beninca.com

TECHNICAL DATA	DU.350N	DU.350NGE	DU.350NV	DU.350NVE
Power supply	230 Vac (50-60Hz)	230 Vac (50-60Hz)	230 Vac (50-60Hz)	230 Vac (50-60Hz)
Motor supply	230 Vac	230 Vac	230 Vac	230 Vac
Max absorbed current	1.7 A	1.7 A	1.7 A	1.7 A
Torque	450 Nm	450 Nm	370 Nm	370 Nm
Opening time	22"	22"	16"	16"
Duty cycle	intensive use	intensive use	intensive use	intensive use
Protection level	IP67	IP67	IP67	IP67
Encoder	NO	YES	NO	YES
Lubrication	OIL	OIL	OIL	OIL
Operating temperature	-20°C /+50°C	-20°C /+50°C	-20°C /+50°C	-20°C /+50°C
Leaf max dimension	4 m	4 m	3 m	3 m
Weight	18.3 kg	20.4 kg	20.2 kg	20.2 kg
Items no. per pallet	32	32	32	32
DU.350CF weight	14.3 kg	14.3 kg	14.3 kg	14.3 kg
No. of foundation boxes per pallet	24	24	24	24